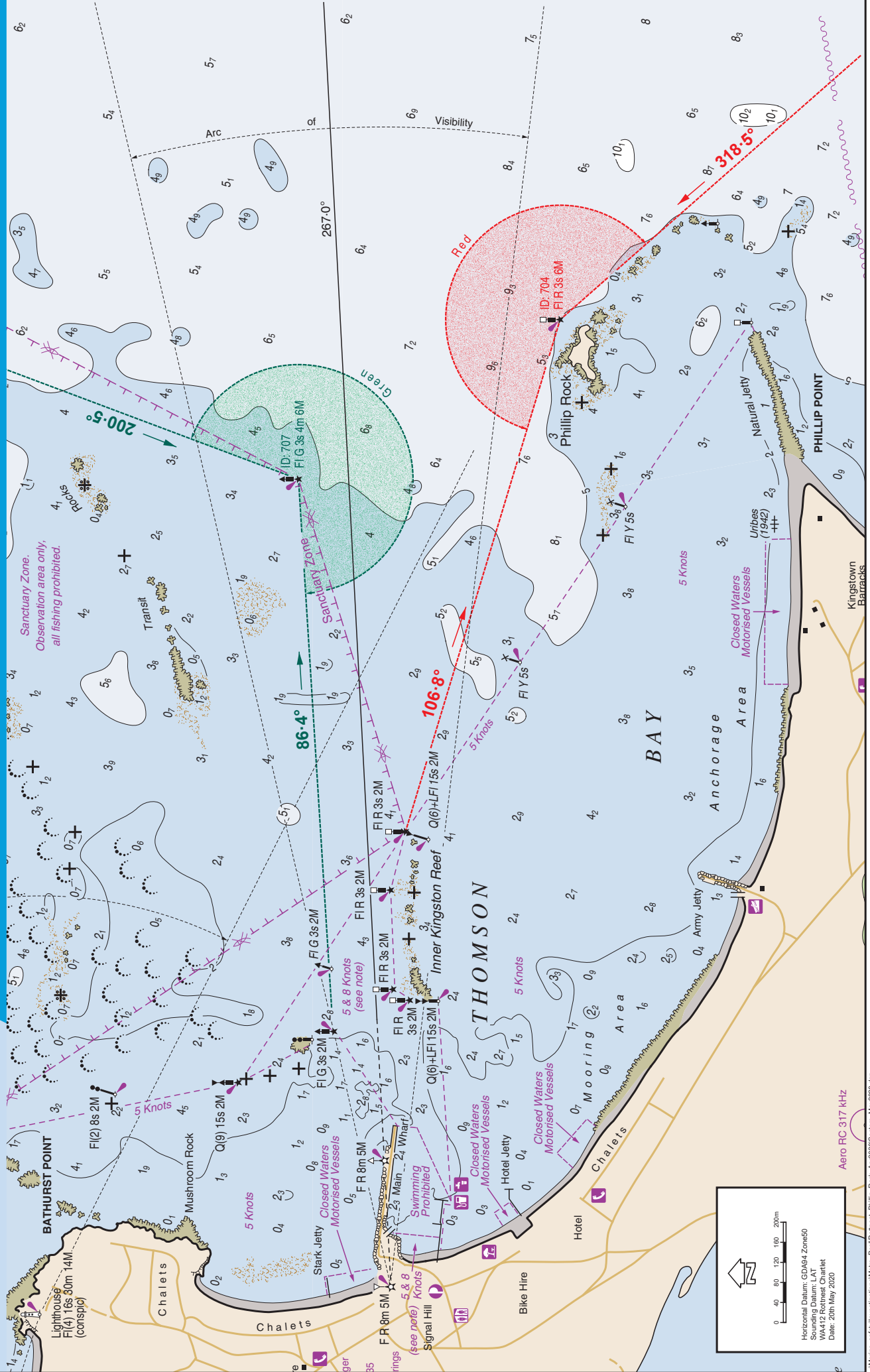


Rottnest Island - Thomson Bay

Sector Lights 707 and 704

DRAFT

Department of
Transport



0 40 80 120 160 200m

Horizontal Datum: GDA94 Zone50
Sounding Datum: LAT
WA412 Rottnest Chartlet
Date: 20th May 2020

Aero RC 317 kHz

L:\Name_safety\investigations\Metro_Peel\Rottnest_Philip_Rock_Apr2020\Sector_May2020.dgn